



pact

building  
local  
promise.



measuring pact's mission **2019**

# our 2019 impact



## health

We support vulnerable people to access the health and social services they need to enjoy a healthy life.

**1,756,641** people with improved access to health and social services

## capacity development

We help systems, organizations and individuals learn, adapt and create sustainable development outcomes.

**794** partner organizations that have improved their performance

## governance

We support an enabling environment that fosters inclusive, transparent and accountable governance.

**126,076** citizens participating in initiatives that resulted in positive civic and state-society engagement

## business and markets

We tap into the power of markets as a force for development.

**13** projects where businesses and markets were a force for positive change

## environment and resilience-building

We partner with resource-dependent communities to help them gain lasting benefit from the sustainable use of the natural resources around them.

**250,097** people benefiting from improved natural resource management

**at pact, we believe** that a world where everyone owns their future is possible. We work toward that vision every day, with each of our projects across 40 countries making an important contribution. We see the seeds of change growing in the young woman who now knows how to keep herself safe from HIV, the village officials who today have the tools to monitor and better respond to local conflict and the young mother who finally has access to the capital she needs to grow her business and better care for her family.

While we see this growth around the world every day, Pact is committed to ensuring our work is measurably improving the state of the world. So, for the ninth year in a row, we are pleased to publish the results of our work for the 2019 fiscal year, from October 2018 to September 2019. The pages that follow include results from our standard set of 14 global indicators that reflect our work across health, livelihoods and economic opportunities, environment and resilience-building, capacity development, governance and business and markets. As we continue to advance

our mission of thriving, resilient communities where people are heard, capable and vibrant, we have expanded our measures to include a new indicator on our work to combat energy poverty.

Each of the following data points represents a seed of change—a person or community whose life has improved because of the work of Pact and our partners. Together, they build an environment for lasting success.

FOR MORE INFORMATION OR TO REQUEST A COPY OF OUR GLOBAL INDICATORS HANDBOOK, CONTACT OUR RESULTS AND MEASUREMENT TEAM, [RM@PACTWORLD.ORG](mailto:RM@PACTWORLD.ORG).

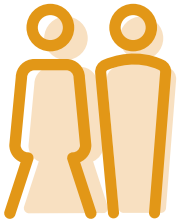
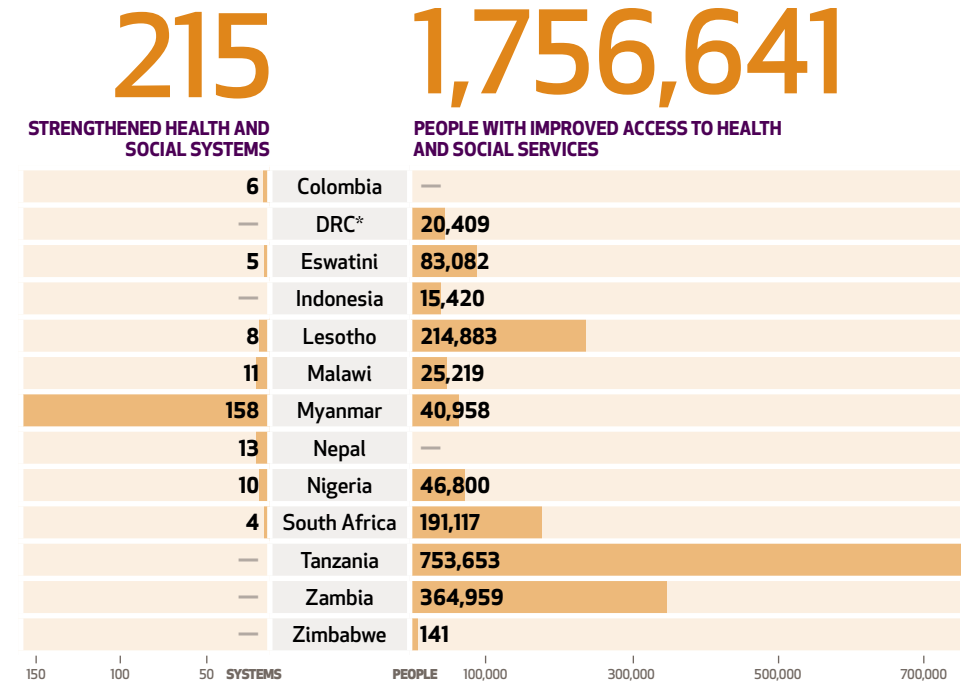
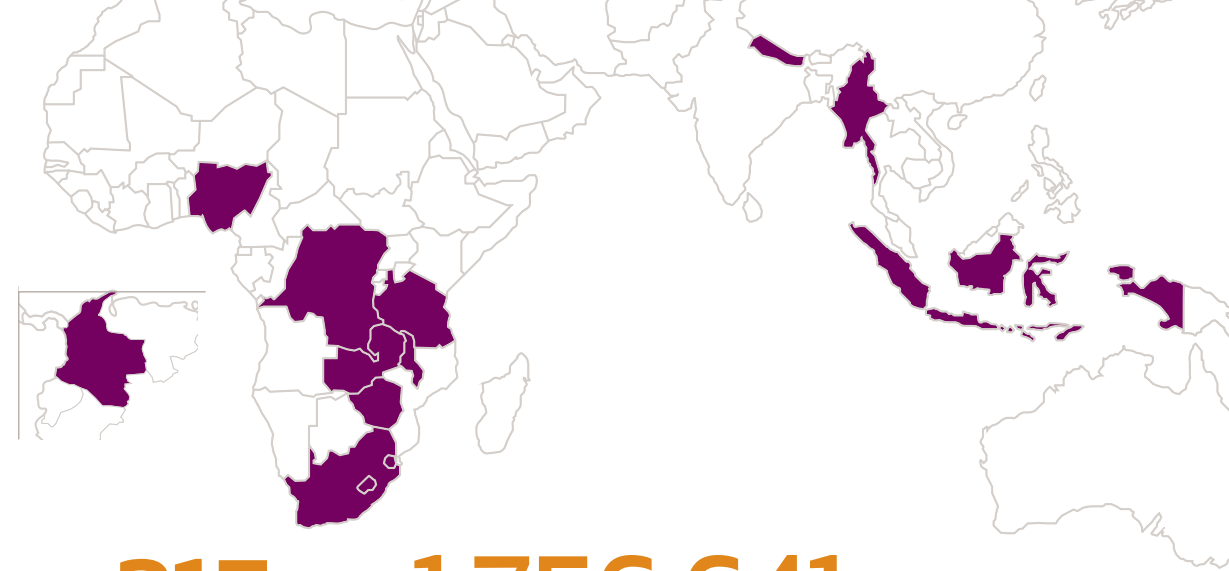


# health

We helped connect **1.7 million people** with health and social services, and we strengthened more than **200 health and social systems**.



In partnership with communities, governments, the private sector, and local nonprofits and care providers, we improve health and social systems around the world, especially those that serve people who are challenged by stigma, poverty and marginalization. We pioneer sustainable health programming that places local communities at the heart of our work. Our programming builds on platforms of HIV/AIDS services, family and child health and social services for vulnerable children and adolescents.



\*Democratic Republic of the Congo (DRC)



# livelihoods and economic opportunities

With Pact's support, more than **1.3 million people** raised their income. More than **92 percent** were women.

Economic, environmental and social resilience and empowerment are at the core of people's ability to own their future, especially for women, youth and disadvantaged groups. Pact works hand in hand with the communities we serve, co-creating sustainable responses to improve their livelihood opportunities, resilience, human capital development and access to finance and markets.



1,311,861

PEOPLE WITH IMPROVED INCOME

749	DRC
8,027	Eswatini
—	Kenya
7,099	Lesotho
5,025	Liberia
59	Madagascar
15,290	Malawi
1,044,793	Myanmar
5,754	Nigeria
203,770	Tanzania
10,388	Zambia
7,209	Great Lakes Region <sup>1</sup>
3,698	West Africa Region <sup>2</sup>

PEOPLE



249,544

GROUPS WITH INCREASED ASSETS

24	DRC
594	Eswatini
6	Kenya
—	Lesotho
157	Liberia
—	Madagascar
87	Malawi
233,232	Myanmar
1,872	Nigeria
12,587	Tanzania
985	Zambia
—	Great Lakes Region <sup>1</sup>
—	West Africa Region <sup>2</sup>

GROUPS

<sup>1</sup> The Great Lakes Region includes a regional project at work in Burundi, DRC, Rwanda and Uganda.  
<sup>2</sup> The West Africa Region includes a regional project at work in Côte d'Ivoire, Guinea, Liberia and Sierra Leone.

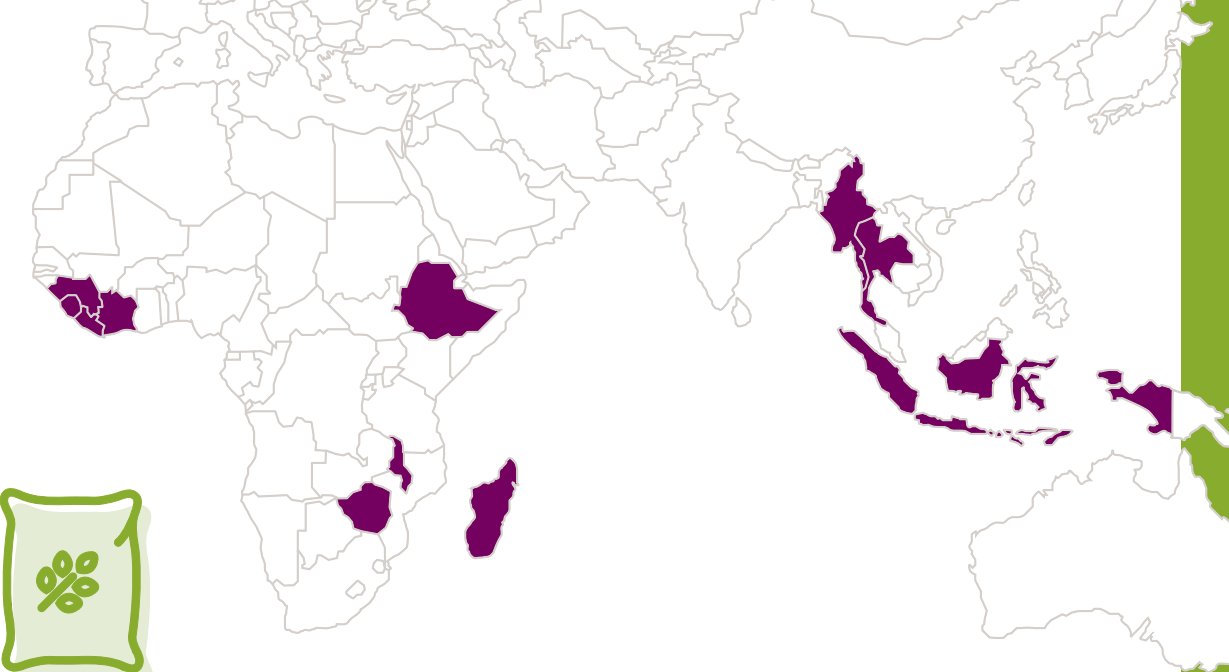


# environment and resilience-building

More than **250,000 people** benefited from improved natural resource management because of Pact, and nearly **1.4 million hectares** were brought under improved management.

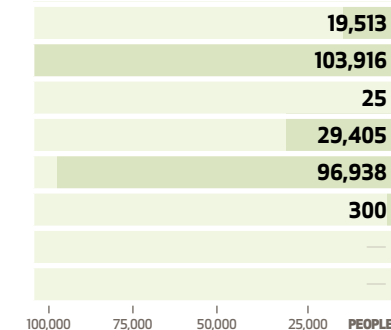


To make lasting change for the next generation, communities must have the skills, resources and opportunities they need to responsibly benefit from the natural resources around them, from fish to forests to mineral deposits. In partnership with governments and local organizations, we strengthen local capacity, build effective resource management systems and help people develop alternative and sustainable nature-based enterprises.



## 250,097

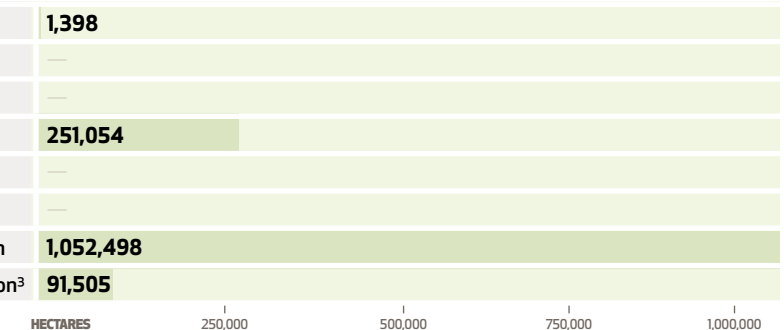
PEOPLE BENEFITING FROM IMPROVED NATURAL RESOURCE MANAGEMENT



## 1,396,455



HECTARES UNDER IMPROVED MANAGEMENT



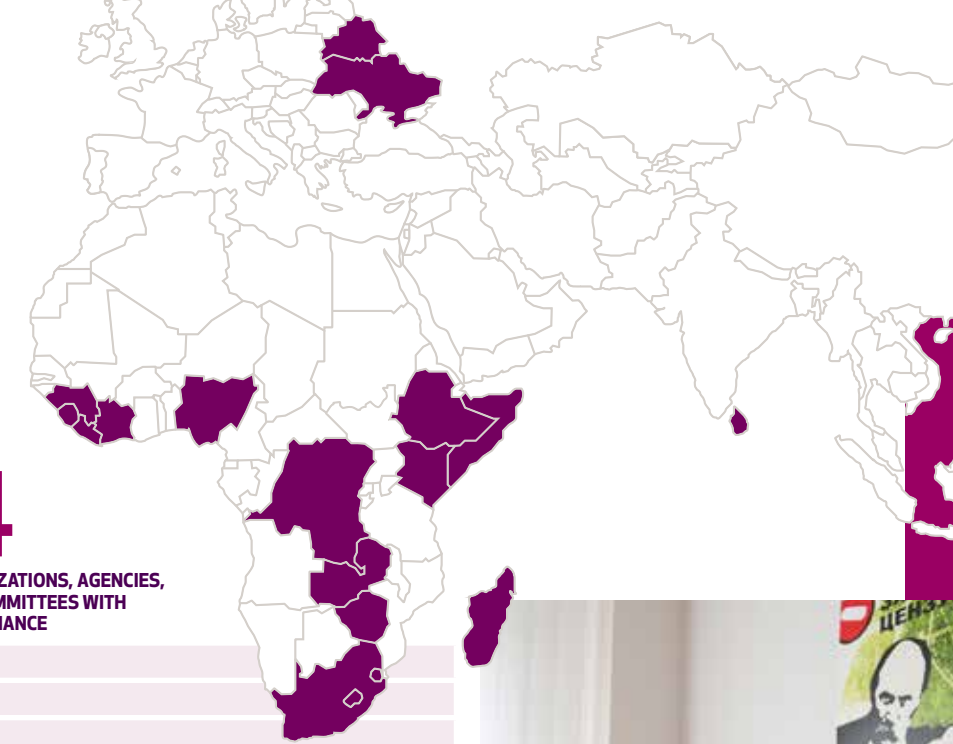
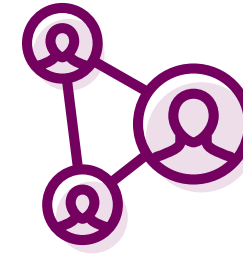
<sup>3</sup> The Southeast Asia Region includes a regional project at work in Thailand and Indonesia.



# capacity development

Pact helped nearly **800 local organizations**, government agencies, networks and community committees strengthen their capacity.

To sustainably transform communities and systems, they must become self-reliant. Pact views capacity development as an inclusive approach, process and outcome. Capacity development must be intentional, go beyond knowledge transfer, rely on co-creation and co-implementation, incorporate innovative technologies in creative ways and agilely work within complex, adaptive systems. Pact's capacity development work is holistic and intersects all of our programming to best meet the needs of our local partners and to bring them to the forefront in this process.



**15**  
SUSTAINABLE PARTNERS

**794**  
NUMBER OF ORGANIZATIONS, AGENCIES, NETWORKS AND COMMITTEES WITH IMPROVED PERFORMANCE

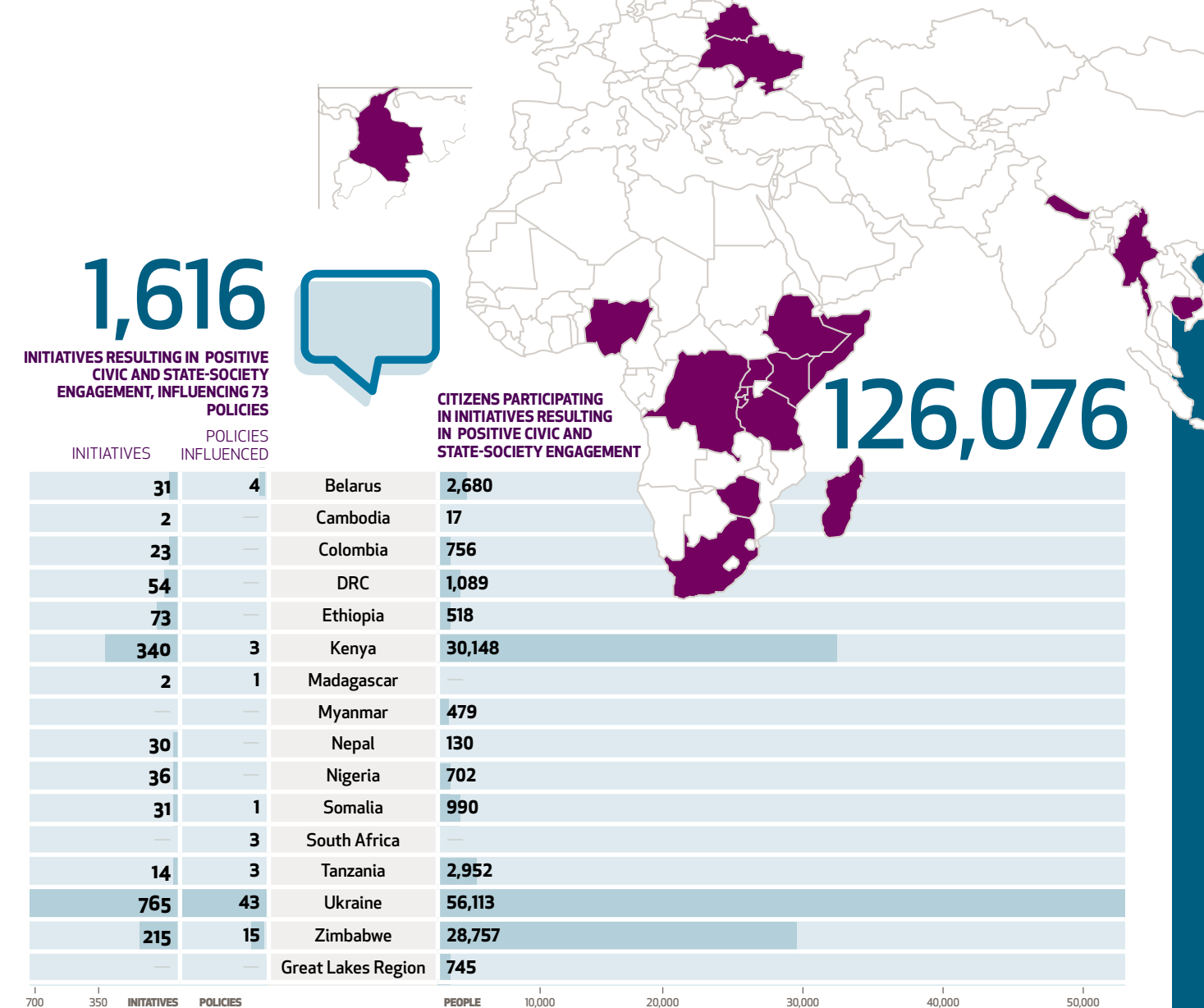
4	Belarus	3
—	DRC	14
—	Eswatini	5
—	Ethiopia	6
9	Kenya	10
—	Lesotho	3
—	Madagascar	5
—	Nigeria	66
—	Somalia	7
—	South Africa	631
—	Sri Lanka	2
—	Ukraine	8
1	Zambia	5
1	Zimbabwe	27
—	West Africa Region	2



Our governance programming enabled more than **125,000 citizens** to take part in **1,616 initiatives** that resulted in positive civic and state-society engagement.



Inclusive, transparent and accountable governance systems are a critical building block for local development. Pact promotes constructive citizen-state relationships by empowering citizens to speak truth to power and supporting governments to deliver quality services and effectively manage public resources. We foster positive social dialogue to support communities and local authorities to resolve longstanding grievances and manage conflict. We also foster collaboration across communities, civil society, governments and the private sector to address difficult collective action challenges.





## business and markets

Pact projects leveraged business and markets as a force for positive change. We helped improve the lives of more than **160,000 artisanal and small-scale miners**.

Using markets as a force for development means that communities have the systems and opportunities that they need to achieve the change they desire. Pact's signature Mines to Markets program brings together government, industry and miners – both men and women – to make artisanal and small-scale mining (ASM) safer, formal and more productive and to address challenges such as child labor in mining. Pact's efforts are helping to reveal and make the most of ASM's contributions to development in communities around the globe.



13

PROJECTS

164,544

ARTISANAL AND SMALL-SCALE MINERS SERVED

1	Cambodia	—
1	Colombia	261
1	DRC	80,932
1	Kenya	48
1	Myanmar	—
1	Rwanda	115
—	Tanzania	1,800
—	Zambia	55
1	Zimbabwe	300
4	Great Lakes Region	81,033
2	Southeast Asia Region	—

MINERS 20,000 40,000 60,000 80,000

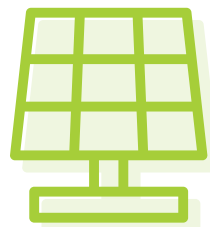






**energy**

With Pact's support, nearly **35,000 people** increased their access to energy and/or increased their means to use it productively.



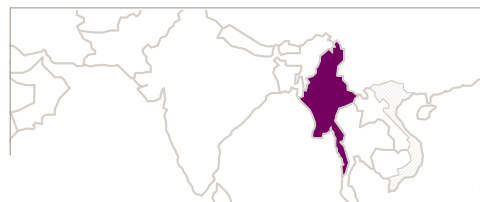
Energy is an essential resource for all people. Without access to reliable, sustainable and affordable sources of energy, starting or growing a business, delivering modern healthcare, or enjoying basic comforts such as lighting are out of reach for more than one billion people. Pact collaborates with governments, companies, investors and other civil society organizations to connect supply and demand for energy, remove market distortions and work toward a future where all people can enjoy the benefits of modern energy.



**34,629**

PEOPLE ACCESSING ENERGY

Myanmar



**our impact, by location**

**BELARUS**

Pact works in Belarus to build civic engagement, achieve positive social change and increase the availability and influence of objective information.

**3** PARTNERS IMPROVED THEIR PERFORMANCE AND **4** GRADUATED TO DIRECT FUNDING.

**2,680** CITIZENS PARTICIPATED IN **31** INITIATIVES RESULTING IN POSITIVE CIVIC AND STATE-SOCIETY ENGAGEMENT AND POSITIVELY INFLUENCED **4** POLICY CHANGES.

**CAMBODIA**

For more than 25 years, Pact has been implementing an integrated approach to improve lives in Cambodia, bridging gaps between sectors so communities can respond to their development challenges holistically.

**17** CITIZENS PARTICIPATED IN **2** INITIATIVES RESULTING IN POSITIVE CIVIC AND STATE-SOCIETY ENGAGEMENT.

**1** PROJECT INCLUDED BUSINESS AND MARKETS AS A FORCE FOR POSITIVE CHANGE

**COLOMBIA**

In Colombia, Pact works with civil society, partners and institutions to reduce child labor in gold and coal mining communities through an integrated approach that supports livelihoods, education, policy solutions and safe mining operations in addressing a complex set of underlying causes.

**6** HEALTH AND SOCIAL SERVICE SYSTEMS WERE STRENGTHENED.

**756** CITIZENS PARTICIPATED IN **23** INITIATIVES RESULTING IN POSITIVE CIVIC AND STATE-SOCIETY ENGAGEMENT.

**1** PROJECT INCLUDED BUSINESS AND MARKETS AS A FORCE FOR POSITIVE CHANGE AND **261** ARTISANAL AND SMALL-SCALE MINERS WERE SERVED.

**DEMOCRATIC REPUBLIC OF THE CONGO**

In Democratic Republic of the Congo, Pact assists communities to gain lasting benefits from the more sustainable use of natural resources. Pact takes an integrated approach to its work in the mining sector, linking mining to livelihoods, governance, health, environment and the strengthening of local, regional and national institutions.

**20,409** PEOPLE HAD IMPROVED ACCESS TO HEALTH AND SOCIAL SERVICES.

**749** PEOPLE INCREASED THEIR NET INCOME, AND **24** SAVINGS AND MICROFINANCE GROUPS INCREASED THEIR FUNDS.

**14** PARTNERS IMPROVED THEIR PERFORMANCE.

**1,089** CITIZENS PARTICIPATED IN **54** INITIATIVES RESULTING IN POSITIVE CIVIC AND STATE-SOCIETY ENGAGEMENT.

**1** PROJECT INCLUDED BUSINESS AND MARKETS AS A FORCE FOR POSITIVE CHANGE AND **80,932** ARTISANAL AND SMALL-SCALE MINERS WERE SERVED.





## INDONESIA

Across Indonesia, Pact is helping people live healthier lives by building the capacity of local organizations, assisting the government in providing health services to vulnerable communities, and catalyzing private sector finance to reduce carbon emissions and combat mercury poisoning.

**15,420** PEOPLE HAD IMPROVED ACCESS TO HEALTH AND SOCIAL SERVICES.

## KENYA

Pact works in Kenya and its border regions to foster peace and stability to support the health, livelihoods, wellbeing and resilience of communities by strengthening national and regional institutions and local civil society organizations.

**6** SAVINGS AND MICROFINANCE GROUPS INCREASED THEIR FUNDS.

**10** PARTNERS IMPROVED THEIR PERFORMANCE AND **9** GRADUATED TO DIRECT FUNDING.

**30,148** CITIZENS PARTICIPATED IN **340** INITIATIVES RESULTING IN POSITIVE CIVIC AND STATE-SOCIETY ENGAGEMENT AND POSITIVELY INFLUENCED **3** POLICY CHANGES.

**1** PROJECT INCLUDED BUSINESS AND MARKETS AS A FORCE FOR POSITIVE CHANGE AND **48** ARTISANAL AND SMALL-SCALE MINERS WERE SERVED.

## LESOTHO

Pact is working to turn back the tide of HIV and AIDS in Lesotho through an integrated strategy of health systems strengthening, civil society capacity development and prevention and access to care for vulnerable populations.

**214,883** PEOPLE HAD IMPROVED ACCESS TO HEALTH AND SOCIAL SERVICES, AND **8** HEALTH AND SOCIAL SERVICE SYSTEMS WERE STRENGTHENED.

**7,099** PEOPLE INCREASED THEIR NET INCOME.

**3** PARTNERS IMPROVED THEIR PERFORMANCE.

## LIBERIA

Pact is supporting communities to develop forest-management capacity and key rural forest-based enterprises that provide sustainable economic opportunities for rural farmers and forest-dependent people while also stemming deforestation and biodiversity loss.

**5,025** PEOPLE INCREASED THEIR NET INCOME, AND **157** SAVINGS AND MICROFINANCE GROUPS INCREASED THEIR FUNDS.

**103,916** PEOPLE BENEFITED FROM IMPROVED NATURAL RESOURCE MANAGEMENT.

## MADAGASCAR

In Madagascar, Pact is supporting social services for young people by improving youth employability, professional skills and access to quality education through merit-based scholarships, tutoring and orientation sessions.

**59** PEOPLE INCREASED THEIR NET INCOME.

**25** PEOPLE BENEFITED FROM IMPROVED NATURAL RESOURCE MANAGEMENT.

**5** PARTNERS IMPROVED THEIR PERFORMANCE.

**2** INITIATIVES RESULTED IN POSITIVE CIVIC AND STATE-SOCIETY ENGAGEMENT AND POSITIVELY INFLUENCED **1** POLICY CHANGE.



## MALAWI

Pact enables vulnerable populations in Malawi, and those dependent on natural resources, to be healthy, HIV-free and income-secure by building the capacity of local organizations to provide key health services and responsibly manage the country's fisheries.

**25,219** PEOPLE HAD IMPROVED ACCESS TO HEALTH AND SOCIAL SERVICES, AND **11** HEALTH AND SOCIAL SERVICE SYSTEMS WERE STRENGTHENED.

**15,290** PEOPLE INCREASED THEIR NET INCOME, AND **87** SAVINGS AND MICROFINANCE GROUPS INCREASED THEIR FUNDS.

**29,405** PEOPLE BENEFITED FROM IMPROVED NATURAL RESOURCE MANAGEMENT, AND **251,054** HECTARES OF ECOSYSTEM WERE UNDER IMPROVED MANAGEMENT.

## MYANMAR

Pact empowers communities in Myanmar to lead their own development, reduce vulnerabilities, improve participation and encourage development innovations in areas such as renewable energy, microfinance, aquaculture and microenterprise growth.

**40,958** PEOPLE HAD IMPROVED ACCESS TO HEALTH AND SOCIAL SERVICES, AND **158** HEALTH AND SOCIAL SERVICE SYSTEMS WERE STRENGTHENED.

**1,044,793** PEOPLE INCREASED THEIR NET INCOME, AND **233,232** SAVINGS AND MICROFINANCE GROUPS INCREASED THEIR FUNDS.

**96,938** PEOPLE BENEFITED FROM IMPROVED NATURAL RESOURCE MANAGEMENT.

**479** CITIZENS PARTICIPATED IN POSITIVE CIVIC AND STATE-SOCIETY ENGAGEMENT.

**1** PROJECT INCLUDED BUSINESS AND MARKETS AS A FORCE FOR POSITIVE CHANGE.

**34,629** PEOPLE INCREASED THEIR ACCESS TO ENERGY.

## NEPAL


In Nepal, Pact supports good governance through strengthening social accountability within the health sector.

 **13** HEALTH AND SOCIAL SERVICE SYSTEMS WERE STRENGTHENED.

 **130** CITIZENS PARTICIPATED IN **30** INITIATIVES RESULTING IN POSITIVE CIVIC AND STATE-SOCIETY ENGAGEMENT.

## NIGERIA

Pact promotes the welfare of the Nigerian people by building the capacity of government and local organizations to address conflict management, the health of mothers and their families and the spread of HIV.

 **46,800** PEOPLE HAD IMPROVED ACCESS TO HEALTH AND SOCIAL SERVICES, AND **10** HEALTH AND SOCIAL SERVICE SYSTEMS WERE STRENGTHENED.

 **5,754** PEOPLE INCREASED THEIR NET INCOME, AND **1,872** SAVINGS AND MICROFINANCE GROUPS INCREASED THEIR FUNDS.

 **66** PARTNERS IMPROVED THEIR PERFORMANCE.

 **702** CITIZENS PARTICIPATED IN **36** INITIATIVES RESULTING IN POSITIVE CIVIC AND STATE-SOCIETY ENGAGEMENT.



## RWANDA

In Rwanda, Pact assists communities to gain lasting benefits from the more sustainable use of natural resources. In doing so, Pact contributes to an economically and environmentally sustainable growth of Rwanda's mining sector.

 **1** PROJECT INCLUDED BUSINESS AND MARKETS AS A FORCE FOR POSITIVE CHANGE AND **115** ARTISANAL AND SMALL-SCALE MINERS WERE SERVED.

## SOMALIA


In Somalia, Pact works closely with government agencies and legal aid organizations to sustainably strengthen access to and understanding of justice mechanisms by individuals and communities.

 **7** PARTNERS IMPROVED THEIR PERFORMANCE.

 **990** CITIZENS PARTICIPATED IN **31** INITIATIVES RESULTING IN POSITIVE CIVIC AND STATE-SOCIETY ENGAGEMENT AND POSITIVELY INFLUENCED **1** POLICY CHANGE.

## SOUTH AFRICA

Throughout South Africa, Pact works with the government and local partners to develop organizational and technical capacity to strengthen the response to TB, HIV and other diseases among orphans and vulnerable children and to deliver quality HIV care, treatment and prevention services.

 **191,117** PEOPLE HAD IMPROVED ACCESS TO HEALTH AND SOCIAL SERVICES, AND **4** HEALTH AND SOCIAL SERVICE SYSTEMS WERE STRENGTHENED.

 **631** PARTNERS IMPROVED THEIR PERFORMANCE.

 **3** POLICY CHANGES.

## SRI LANKA

In Sri Lanka, Pact works to build the organizational capacity of local organizations that implement activities to support HIV prevention, care and treatment services for key populations.


 **2** PARTNERS IMPROVED THEIR PERFORMANCE.

## TANZANIA

In Tanzania, Pact enables communities to take charge of their own social and economic development by improving access to health services, providing for vulnerable children, helping individuals to become income-secure and collaborating with local human rights organizations.

 **753,653** PEOPLE HAD IMPROVED ACCESS TO HEALTH AND SOCIAL SERVICES.

 **203,770** PEOPLE INCREASED THEIR NET INCOME, AND **12,587** SAVINGS AND MICROFINANCE GROUPS INCREASED THEIR FUNDS.

 **2,952** CITIZENS PARTICIPATED IN **14** INITIATIVES RESULTING IN POSITIVE CIVIC AND STATE-SOCIETY ENGAGEMENT AND POSITIVELY INFLUENCED **3** POLICY CHANGES.

 **1,800** ARTISANAL AND SMALL-SCALE MINERS WERE SERVED.

## UKRAINE

In Ukraine, Pact's governance and capacity development work empowers citizens to continue pushing for transparent and democratic governance.

 **8** PARTNERS IMPROVED THEIR PERFORMANCE.

 **56,113** CITIZENS PARTICIPATED IN **765** INITIATIVES RESULTING IN POSITIVE CIVIC AND STATE-SOCIETY ENGAGEMENT AND POSITIVELY INFLUENCED **43** POLICY CHANGES.

## ZAMBIA

With a focus on high-risk groups, Pact is helping Zambia to reduce new HIV infections by increasing HIV awareness and the use of HIV services, and by building the capacity of local organizations to deliver quality programs.

 **364,959** PEOPLE HAD IMPROVED ACCESS TO HEALTH AND SOCIAL SERVICES.

 **10,388** PEOPLE INCREASED THEIR NET INCOME, AND **985** SAVINGS AND MICROFINANCE GROUPS INCREASED THEIR FUNDS.

 **5** PARTNERS IMPROVED THEIR PERFORMANCE AND **1** GRADUATED TO DIRECT FUNDING.

 **55** ARTISANAL AND SMALL-SCALE MINERS WERE SERVED.





## ZIMBABWE

Pact promotes equitable and peaceful systems in Zimbabwe, building local organizational capacity and addressing challenges faced by artisanal and small-scale miners.

 **141** PEOPLE HAD IMPROVED ACCESS TO HEALTH AND SOCIAL SERVICES.

 **27** PARTNERS IMPROVED THEIR PERFORMANCE AND **1** GRADUATED TO DIRECT FUNDING.

 **300** PEOPLE BENEFITED FROM IMPROVED NATURAL RESOURCE MANAGEMENT.

 **28,757** CITIZENS PARTICIPATED IN **215** INITIATIVES RESULTING IN POSITIVE CIVIC AND STATE-SOCIETY ENGAGEMENT AND POSITIVELY INFLUENCED **15** POLICY CHANGES.

 **1** PROJECT INCLUDED BUSINESS AND MARKETS AS A FORCE FOR POSITIVE CHANGE AND **300** ARTISANAL AND SMALL-SCALE MINERS WERE SERVED.

## regional projects

### AFRICA GREAT LAKES REGION

In Democratic Republic of the Congo, Uganda, Rwanda and Burundi, Pact assists communities to gain lasting benefits from the more sustainable use of natural resources. Pact takes an integrated approach to its work in the mining sector, linking mining to livelihoods, governance, health, environment, and the strengthening of local, regional and national institutions.

 **7,209** PEOPLE INCREASED THEIR NET INCOME.

 **745** CITIZENS PARTICIPATED IN POSITIVE CIVIC AND STATE-SOCIETY ENGAGEMENT.

 **4** PROJECTS INCLUDED BUSINESS AND MARKETS AS A FORCE FOR POSITIVE CHANGE AND **81,033** ARTISANAL AND SMALL-SCALE MINERS WERE SERVED.

### SOUTHEAST ASIA REGION

Pact works across Southeast Asia to catalyze private sector finance investments in agriculture, forestry and other land use in order to reduce related greenhouse gas emissions, while creating profitable business models. Pact is supporting developing countries to achieve sustainable landscape-related climate mitigation goals as submitted to the United Nations Framework Convention on Climate Change.

 **91,505** HECTARES OF ECOSYSTEM WERE UNDER IMPROVED MANAGEMENT.

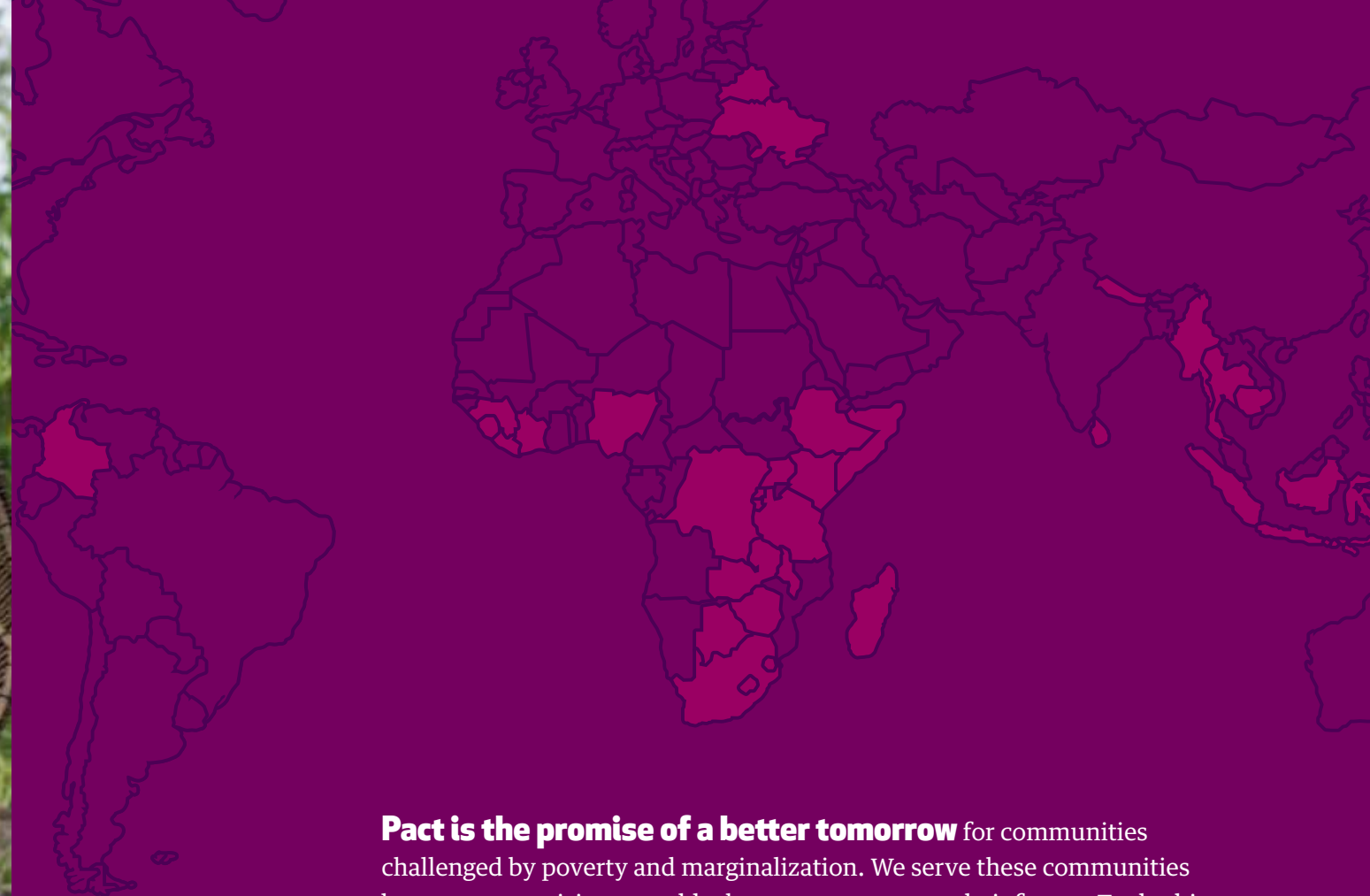
### WEST AFRICA REGION

Across West Africa, Pact builds the capacity of local organizations, national government agencies and the regional economic community secretariat to combat wildlife trafficking, increase coastal resilience to climate change and address natural resource degradation to improve livelihoods and natural ecosystems across the region.

 **3,698** PEOPLE INCREASED THEIR NET INCOME.

 **1,052,498** HECTARES OF ECOSYSTEM WERE UNDER IMPROVED MANAGEMENT.

 **2** PARTNERS IMPROVED THEIR PERFORMANCE.



**Pact is the promise of a better tomorrow** for communities challenged by poverty and marginalization. We serve these communities because we envision a world where everyone owns their future. To do this, we build systemic solutions in partnership with local organizations, businesses and governments that create thriving and resilient communities where those we serve are heard, capable and vibrant. Around the globe, Pact's integrated, adaptive approach is shaping the future of international development.



building  
local promise.

[pactworld.org](http://pactworld.org)